



waste less, **achieve** more

ABN 41 129 141 484

Level 1, 76 Roberts Street
Osborne Park
Perth WA 6017
PO Box 6044
East Perth WA 6892

t: +61 8 9444 7668

jenny@encycle.com.au
www.encycle.com.au

Capability Statement

15 September 2016

A decorative graphic at the bottom of the page consisting of several overlapping, wavy lines in shades of green, creating a sense of movement and flow.

Encycle company profile

Encycle is a leading environmental consultancy specialising in waste management and recycling. Encycle is based in Western Australia and services clients in other states of Australia, particularly in New South Wales and Victoria.

Encycle strives to genuinely understand the unique issues and opportunities faced by each client to ensure a long term professional relationship and implementation of continual improvement processes that result in a better outcome for customers and the environment.

At Encycle we endeavour to listen to and meet our client's needs with professionalism and integrity. It is important to us that we deliver a quality service, using robust factual information, on time and to budget.

Benefits of Encycle's services

- ✔ Better planning for high performing systems
- ✔ Minimise business risks from sensible waste operations
- ✔ Identify partnership and collaboration opportunities
- ✔ Manage waste more efficiently and cost effectively
- ✔ Encycle focus on developing long-term relationships
- ✔ Expertise to bring innovative, bespoke solutions

Encycle values

- ✔ We work with professionalism and integrity at all times
- ✔ We are honest, trustworthy and ethical
- ✔ We treat work colleagues and clients with respect
- ✔ We take care of ourselves and others in the workplace and the workplace of our clients and stakeholders
- ✔ We protect the environment from the impacts of waste
- ✔ We take great pride in doing excellent work
- ✔ People want to work with us



What we do – overview of services

Waste management plans

- Development Applications
- Green Star reports
- Construction site plans
- Operational plans
- Set targets/monitor KPIs
- Assign roles/responsibilities

Design advice

- Waste and recycling storage
- Infrastructure recommendations
- Appropriate equipment
- Collection access
- Operational logistics
- Design guidelines
- Green Star reports

Waste audits and assessments

- Due diligence assessments
- Risk assessment
- Triple bottom line assessment
- Waste compositional analysis
- Green Star Performance Materials credit assessments

Data management and reporting

- Data capture and management
- Recycling performance reports
- Business case development
- Carbon reporting
- Australian Packaging Covenant action plan reports

Policy and strategy

- Sustainable procurement policies
- Waste management strategies
- Waste management policies
- Research and policy development
- Environmental guidelines
- Environmental Management Systems

Waste/recycling service contracts

- Tender and contract scoping
- Tender evaluation
- Waste contracts auditing
- Recycling contract auditing
- Third party verification

Feasibility studies

- Business case development
- Cost benefit evaluation
- CAPEX and OPEX evaluation
- Compare new technologies

Funding and grant applications

- Funding advice
- Submission development
- Milestone and final reporting
- Case study development

Training and communication

- Communication programs
- Workshop facilitation
- Behaviour change strategies
- Educational materials

Professional memberships

-  Green Building Council of Australia
-  Property Council of Australia
-  National Association of Women in the Construction Industry

Encycle Directors

Jenny Campbell

B.App.Sc Deakin University 2000
BSc (hons) Deakin University 2002

A founding director of Encycle Consulting, Jenny has been involved in the environmental and waste management fields in both public and private sectors since 2000.

Jenny is a leader in her field of waste management and recycling for the built environment. Her wealth of experience in the operational aspects of waste management compliments her knowledge and understanding of environmental policy and legislation to achieve the best possible outcomes for our clients.

Jenny prides herself in providing services of a highly professional standard. Her exceptional project management skills means that she can deliver multiple projects within tight timeframes and to clients' expectations.

Prior to establishing Encycle, Jenny has previously worked for ESD Consultancy firm Sustainable Built Environments P/L, the WA Department of Environment and Conservation, the Melbourne Cricket Ground, Waste Audit and Consultancy Services P/L and the then EcoRecycle Victoria (now Sustainability Victoria).

Jenny is Chair of the Property Council of Australia's WA Sustainable Development Committee and Treasurer for National Association of Women in Construction WA Chapter.



Dr Anne-Marie Bremner

BSc (hons) Environmental Science (Sussex)
PhD Environmental Chemistry (Bristol)

Dr Bremner brings experience of working in both the public and private sectors, combined with a sound understanding of carrying out scientific research to provide reports that are meaningful and relevant.

Anne-Marie's previous roles include data management and policy advisor for Department of Environment and Conservation, WA, Policy Advisor at the UK government agency: WRAP and Project Coordinator for the 2001 G8 Renewable Energy Task Force reporting directly to the then CEO of Shell International.

At Encycle, Anne-Marie specialises in providing strategic guidance, policy research and systems development. Other capabilities include: providing monitoring and evaluation advice and developing robust, credible reporting processes that are not labour intensive.

Between 2012 and 2014, Dr Bremner was a board member of the WA Waste Authority, the statutory body providing waste management advice to the WA Minister for the Environment.



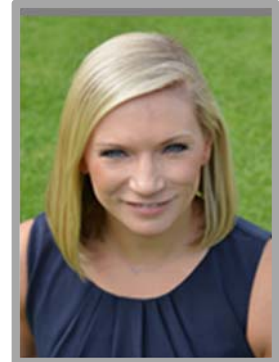
Encycle Senior Consultants

Kate Stocker – Senior Environmental Consultant

BSc (hons) Sustainable Design & Environmental Management

With eight years' consultancy experience within the environmental, sustainability and waste sectors Kate has developed a wealth of experience, in particular within waste and resource management and the project management of sustainable building projects.

Kate has also played key roles in the delivery of environmental management systems, carbon footprints, and energy performance rating projects, as well as regulatory and licensing experience.



Key capabilities

- Strong background in project management of international green building award schemes
- Detailed knowledge of waste and resource management
- Knowledge of key waste issues and barriers both locally and globally
- Experience working with local government and legislative bodies

Project experience

Encycle Consulting have extensive experience and knowledge of the Australian waste management industry. Encycle Consulting have a broad range of experience in WA, NSW and Victoria. A few recent project examples are listed below. References for these projects or additional examples of Encycle experience are available on request.

Waste Management Planning – Design phase

Brookfield Multiplex, New Perth Stadium and Precinct, 2013-present

Lyons Consortium/Metropolitan Redevelopment Authority Yagan Square, Perth, 2015

Metropolitan Redevelopment Authority Elizabeth Quay Precinct, 2015

Far East Consortium Elizabeth Quay Lots 9&10 2015

HASSELL Waterbank Public Domain, Perth 2015

Lend Lease Waterbank, Building J Perth 2015

Eureka Funds Management Indooroopilly, Brisbane 2016

Wanda Hotel Group One Alfred Street, Sydney 2015

Cox Howlett & Baily Woodland, Mill Green, Perth 2015

Leighton Properties Kings Square 1, 2, 3, 4, Perth 2013/4

Seven Entertainment Kings Square 6, 7 Perth 2014

D&C Corporation Capital Square, Perth 2013

Brookfield Multiplex Brookfield Place (BHP Billiton building) 2008 – 2012

Waste Minimisation Review

Crown Perth (Casino, hotel, food & beverage) 2008 – 2015

Grand Hyatt Group Hyatt Regency Perth (Hotel, conference) 2013

One40william, Perth (mixed-use retail, food, bars, office) 2013

Royal Automobile Association WA, (office) 2013

Brookfield Place, Perth, (mixed-use retail, food, bars, office) 2012

Fortescue Metals Group 3 mine sites, Pilbara, WA 2011

Rio Tinto Iron Ore, mine site, Pilbara WA 2011

Rottneest Island Resort accommodation, retail, food, bars 2011

